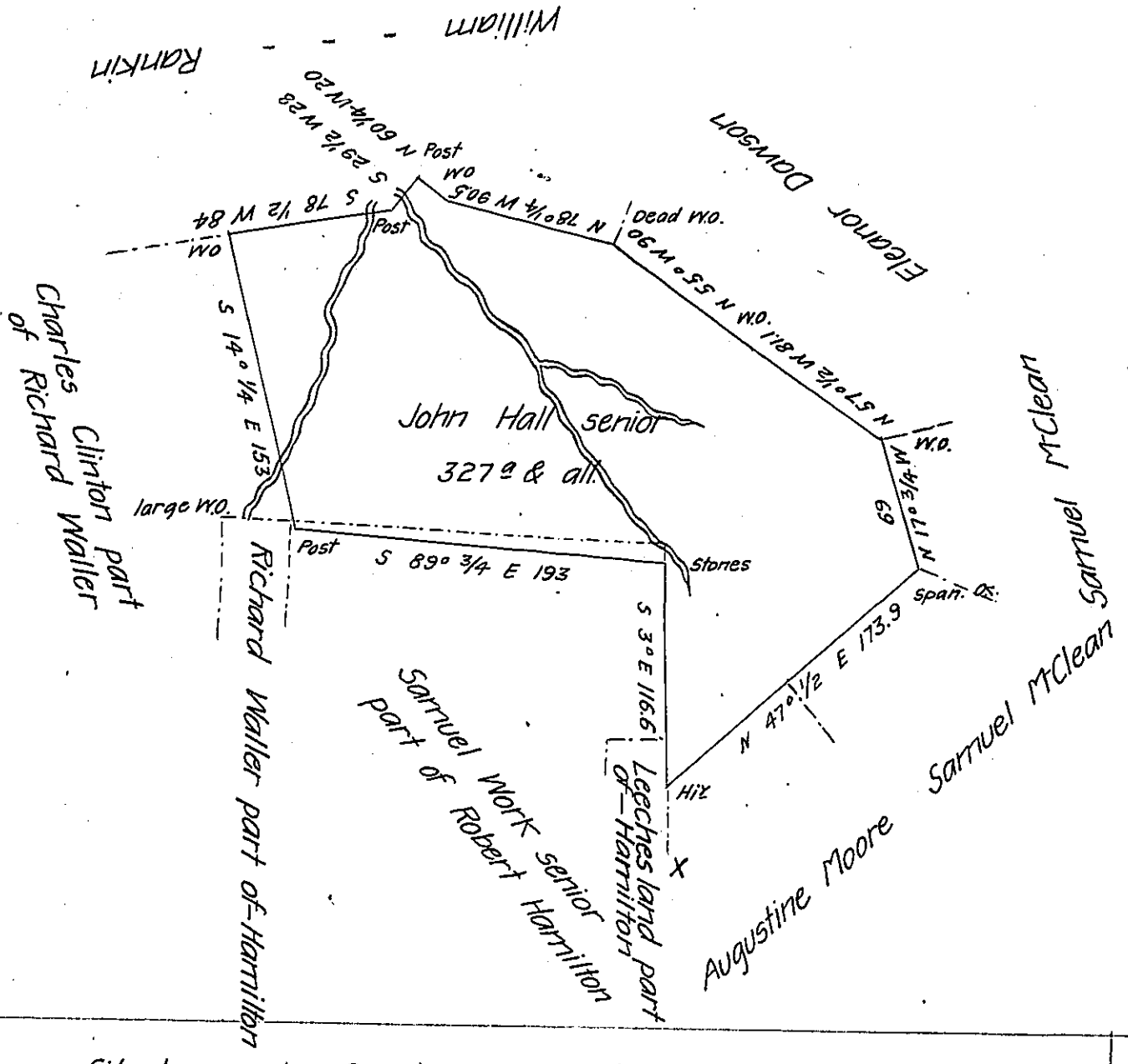


Note- the dotted line in the draught represents a piece of land recovered by John Hall from Samuel Work out of Hamilton's Survey, before the board of Property. A.P.E.S.G. A M-Clean.



Situate on the Great Road leading from Union Town to Connelsville - on the Waters of Redstone Creek and Surveyed the 27th day of October 1785 in pursuance of a warrant dated the 29th day of September 1785

To Andrew Porter Esquire Alexander McClean Deputy Surveyor General

* Say 27th Sept^r

IN TESTIMONY that the above is a copy of the original remaining on file in the Department of Internal Affairs of Pennsylvania, made conformably to an Act of Assembly approved the 16th day of February, 1833, I have hereunto set my Hand and caused the Seal of said Department to be affixed at Harrisburg, this twenty-fifth day of October 1905.

Loach P. Brown
Secretary of Internal Affairs.